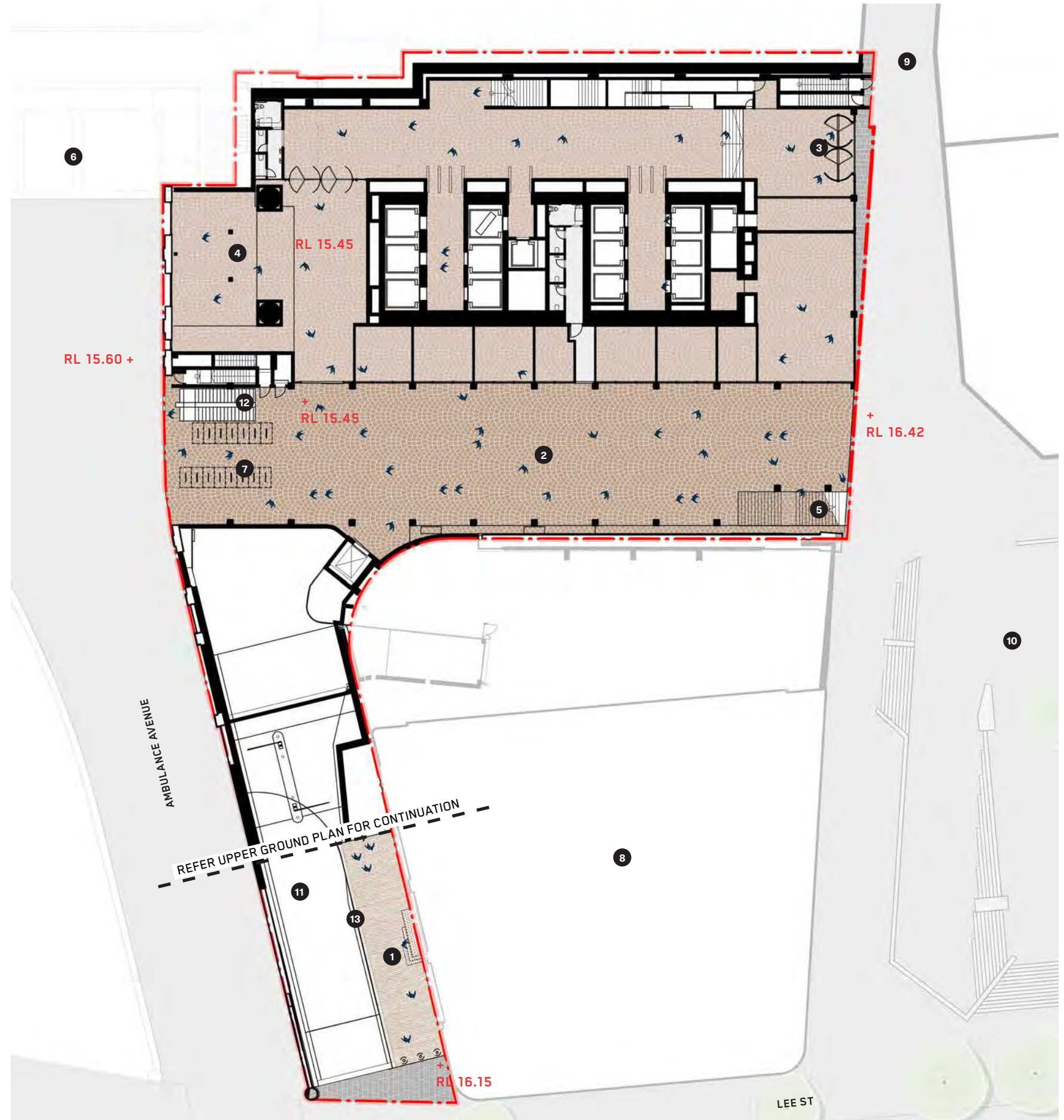




LEGEND

- 1 The Ramp
- 2 Lower Level Link Zone RL16 (not public in Day 1)
- 3 YHA main entrance
- 4 Atlassian lobby
- 5 Public stairs from Henry Deane Plaza to RL21 (Day 1)
- 6 Central Station
- 7 Visitor bike parking (Day 1)
- 8 Adina Hotel
- 9 Devonshire Street Tunnel
- 10 Henry Deane Plaza
- 11 Basement dive structure (Day 1)
- 12 Bike EOT facilities access stairs (Day 1)
- 13 Brick wall to dive structure (safety barrier)

Refer architectural documentation.

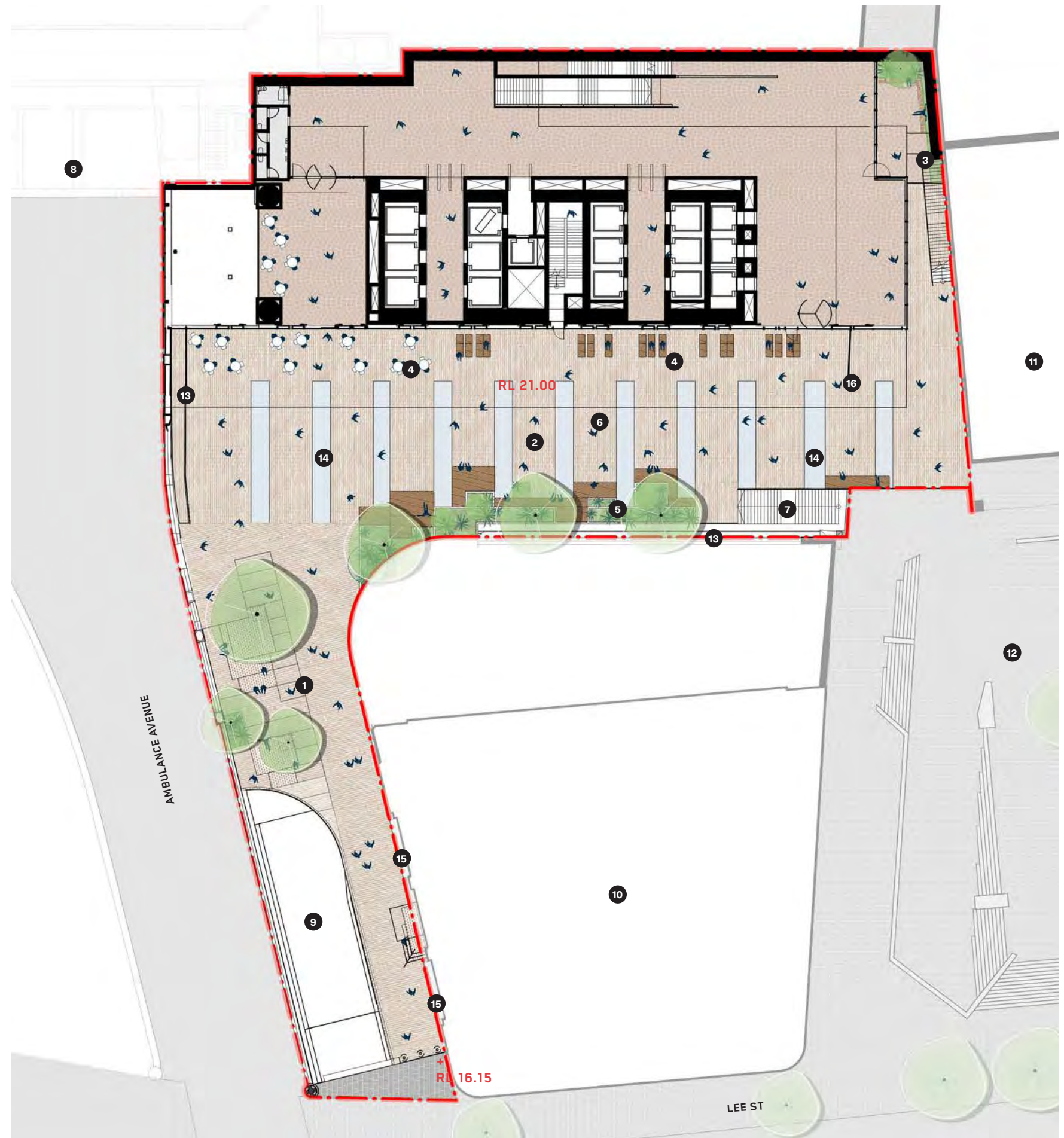




LEGEND

- 1 The Ramp
- 2 Upper Level Link Zone RL21
- 3 YHA Courtyard
- 4 Retail (potential) and informal spill-out under verandah
- 5 Landscaped Upper Level western edge
- 6 Shed roof eve line
- 7 Public stairs from Henry Deane Plaza to RL21 (Day 1)
- 8 Central Station
- 9 Basement dive structure (Day 1)
- 10 Adina Hotel
- 11 Dexus-Frasers Site
- 12 Henry Deane Plaza
- 13 Safety balustrade (refer architect's documentation)
- 14 Skylights - refer to architect's documentation
- 15 Heritage skylights - to be reinstated (refer Heritage Interpretation report)
- 16 Wind mitigation screen (refer architect's documentation)

Refer architectural documentation.





Approved Application No: SSD 10405

Granted on: 15 October 2021

Signed: AW Sheet No: 125 of 161

LEGEND

- 1 Heritage wall
- 2 Low planting
- 3 Raised masonry seating platforms with opportunities for heritage interpretation
- 4 Small native canopy trees
- 5 Wide stairs
- 6 Ramp (slope > 1 in 10)
- 7 Adina Hotel main entry
- 8 Heritage skylights - to be reinstated (refer Heritage Interpretation report). Skylights to be coordinated with ramp levels and gradient
- 9 Hydraulic bollards
- 10 Basement dive structure
- 11 Brick wall to dive structure (safety barrier)
- 12 Upper Ground Link Zone (RL21)
- 13 Adina Hotel



Refer architectural documentation.



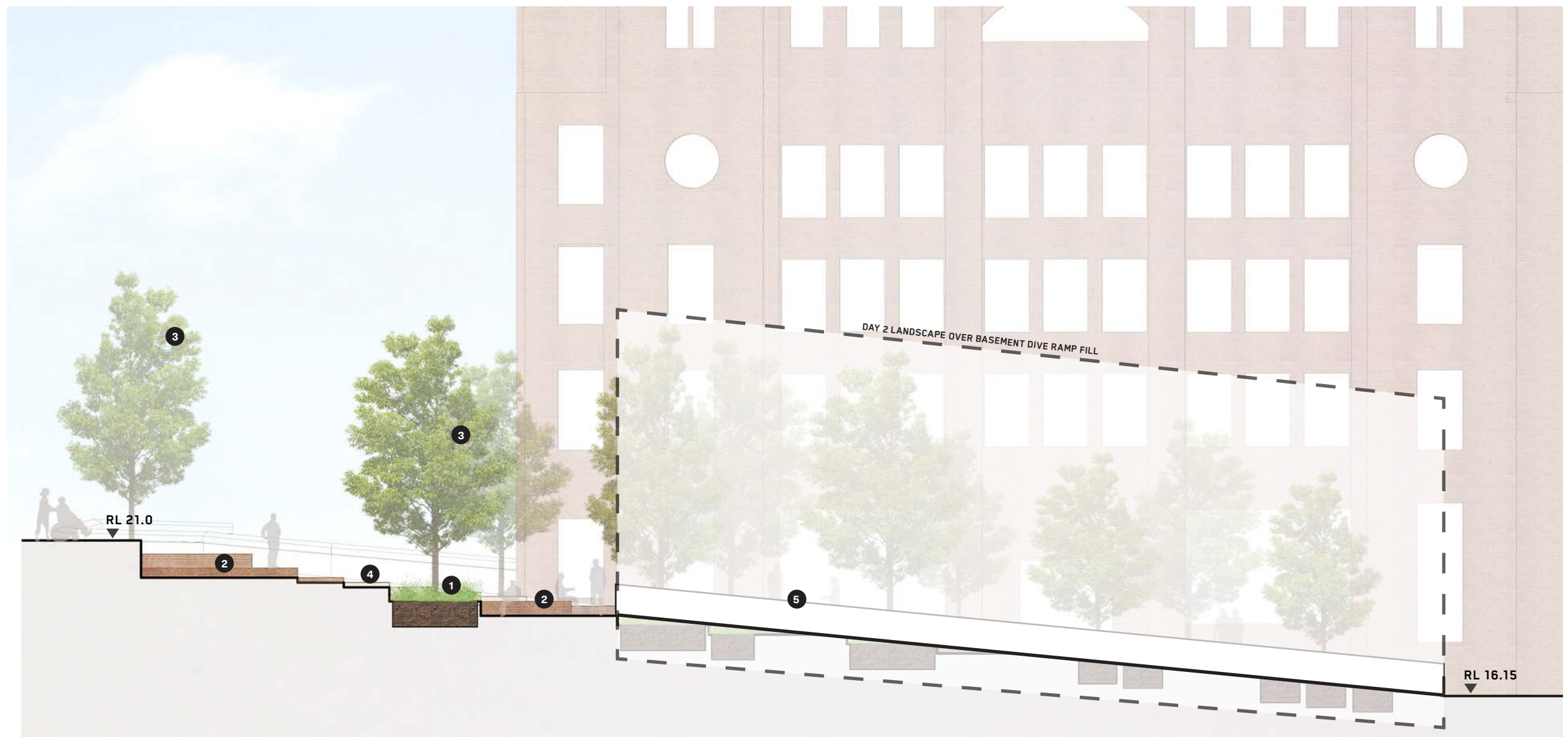


KEY PLAN



LEGEND

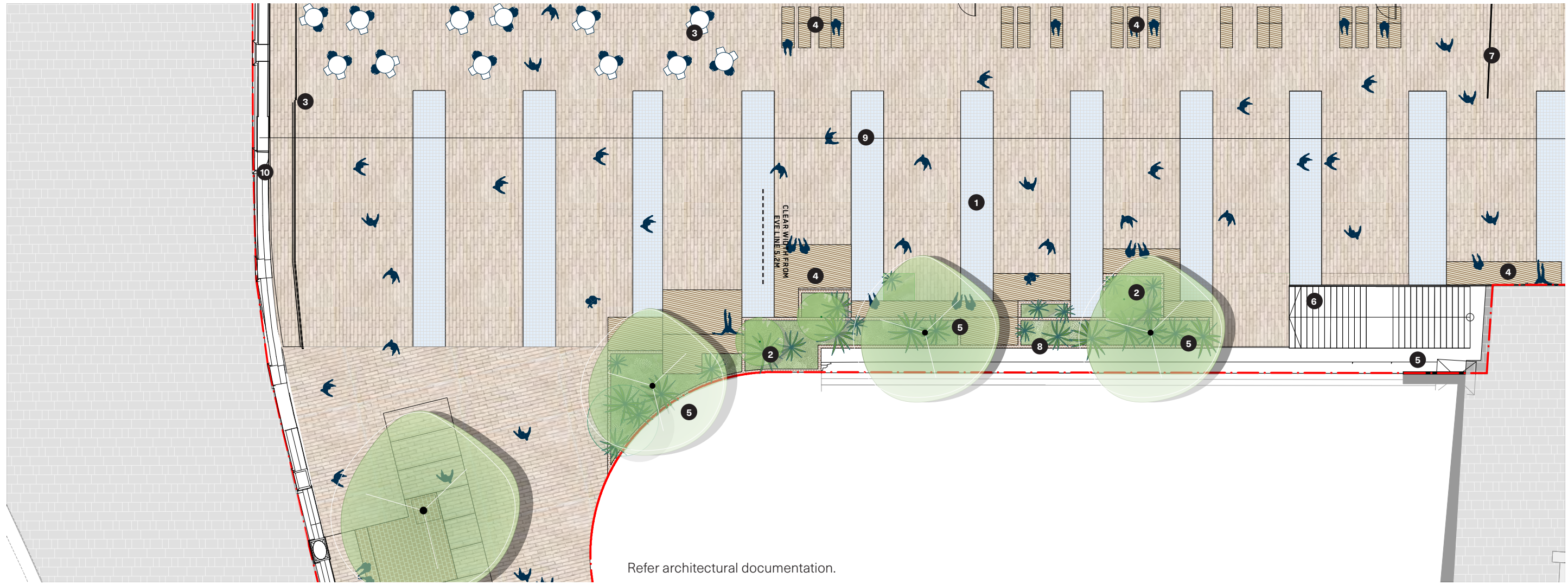
- 1 Low planting
- 2 Raised masonry seating platforms with opportunities for heritage interpretation
- 3 Small native canopy trees
- 4 Wide stairs
- 5 Brick wall to dive structure (safety barrier)





LEGEND

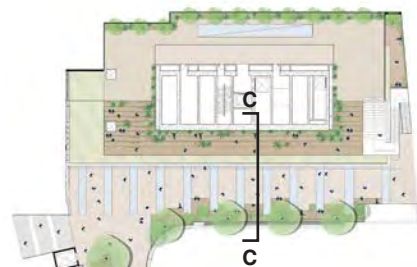
- 1 Skylights - refer to architect's documentation
- 2 Planted western edge
- 3 Licensed seating area
- 4 Public seating area
- 5 Small native canopy trees
- 6 Stair connection from Henry Deane Plaza (Day 1)
- 7 Wind mitigation screen
- 8 Safety balustrade & void to Lower Ground Link Zone
- 9 Shed roof eve line
- 10 Safety Balustrade / wind mitigation screen (refer Architect's documentation)



Refer architectural documentation.

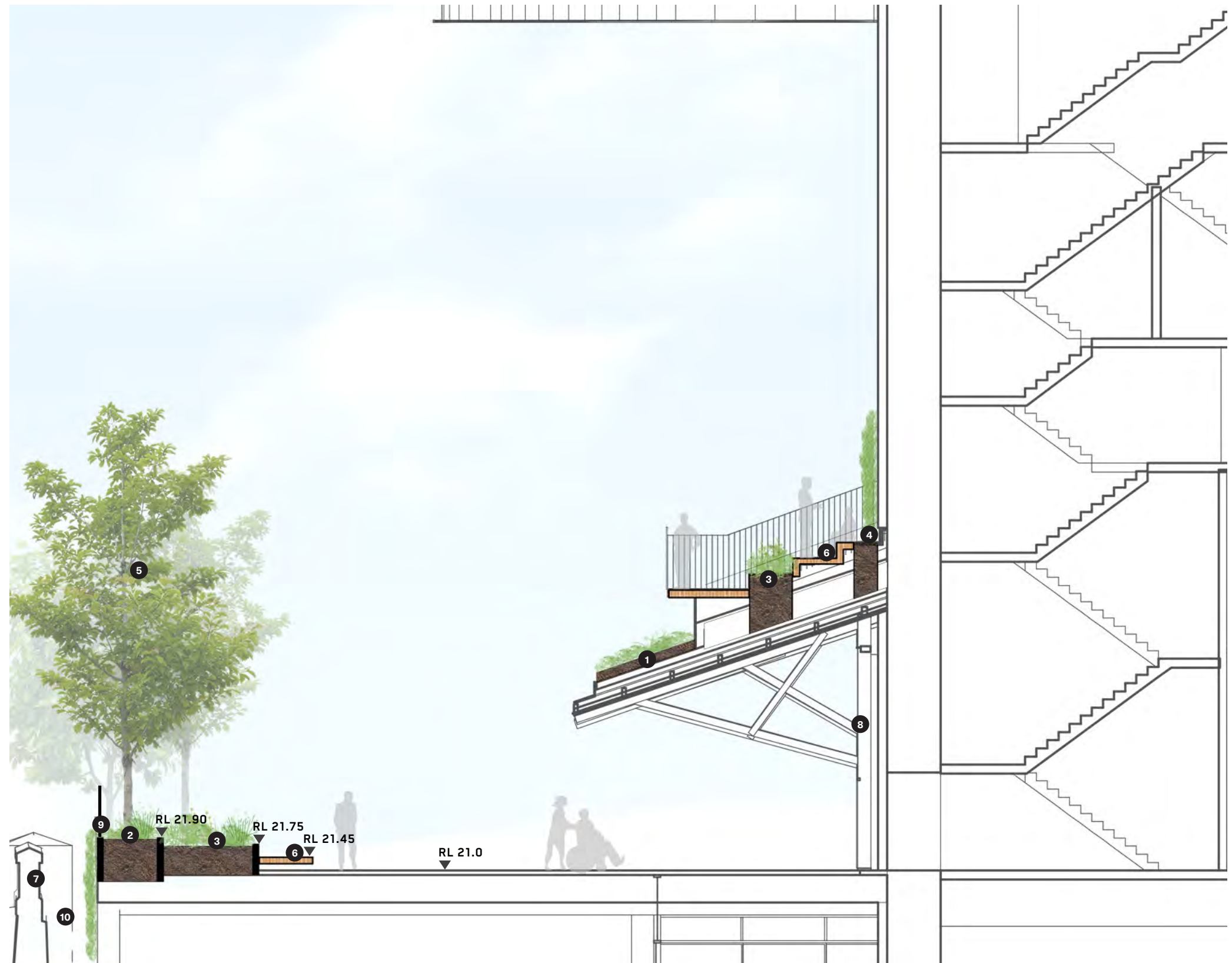


KEY PLAN



LEGEND

- 1 Extensive green roof system, minimum soil depth 200mm
- 2 Large shrubs / small trees, minimum soil depth 800mm
- 3 Shrubs, minimum soil depth 500-600mm
- 4 Climbing plants, minimum soil depth 500-600mm
- 5 Small native canopy trees
- 6 Timber decks
- 7 Heritage wall to Adina Hotel
- 8 Heritage shed building
- 9 Safety balustrade (refer to architect's documentation)
- 10 Void to Lower Ground Link Zone





LEGEND

- 1 YHA Courtyard
- 2 Shrubs and climbers to perimeter wall and fence, minimum soil depth 500-600mm
- 3 Small native canopy tree
- 4 Seating
- 5 Entry
- 6 Stairs to OSD Shed Roof



Refer architectural documentation.



LEGEND

- 1 Climbing plants to tower core and mega-columns
- 2 Shrub planting
- 3 Timber bleachers
- 4 Upper deck (retail spill-out)
- 5 Planted canopy over deck (refer to architect's documentation)
- 6 Controlled access to bleachers
- 7 Raised planted edge with screen planting
- 8 Extensive green roof
- 9 Bleacher access stairs
- 10 Access stairs from Upper Ground Link Zone
- 11 Balustrade 'palisade' (refer to architect's documentation)

Notes:

- The extensive Green Roof system is proposed to be a 'Junglify Biodiversity Green Roof' and will include stabilisation, sub soil irrigation and will require no mulch.
- The growing media will be made up of an A & B horizon for all other areas with the top 400mm being the A Horizon.
- The irrigation system will be a drip irrigation system that sits sub surface within the growing media. We chose this system as it
- The Green wall is proposed to be a Junglify Green Wall/Breathing Wall to ensure a large variety of plants can grow in the lower light conditions.



**Planning,
Industry &
Environment**

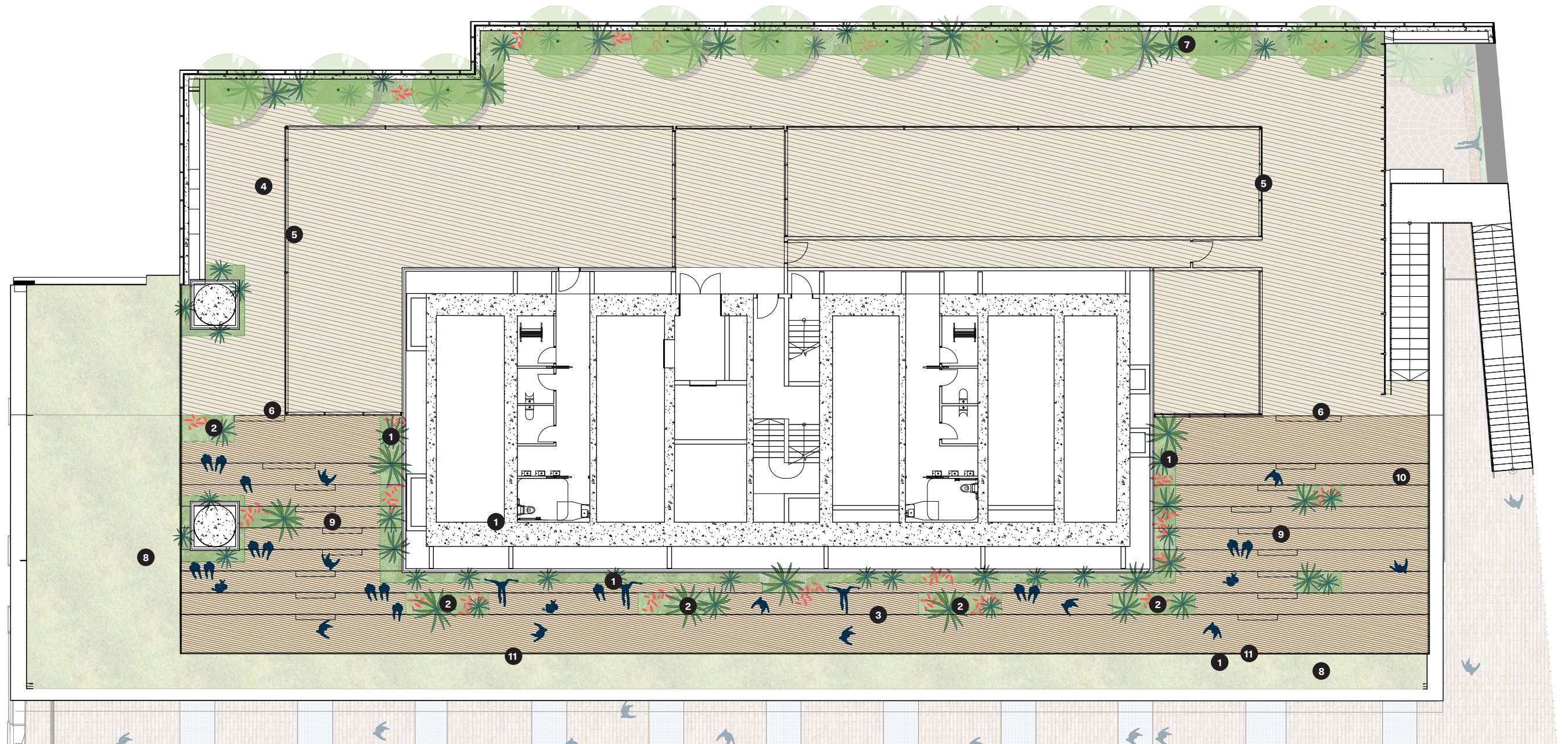
Issued under the Environmental Planning and Assessment Act 1979

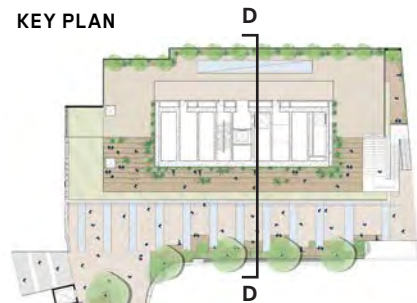
Approved Application No: SSD 10405

Granted on: 15 October 2021

Signed: AW Sheet No: 130 of 161

Refer architectural documentation.





LEGEND

- 1 Extensive green roof system, minimum soil depth 200mm
- 2 Large shrubs / small trees, minimum soil depth 800mm
- 3 Shrubs, minimum soil depth 500-600mm
- 4 Climbing plants, minimum soil depth 500-600mm
- 5 Small native canopy trees
- 6 Screen planting (Syzygium sp.)
- 7 Timber decks
- 8 Heritage wall to Adina Hotel
- 9 Heritage shed building
- 10 Canopy with extensive green roof, minimum soil depth 200mm
- 11 Lower Ground Link Zone (RL16)
- 12 Void to Lower Ground Link Zone

